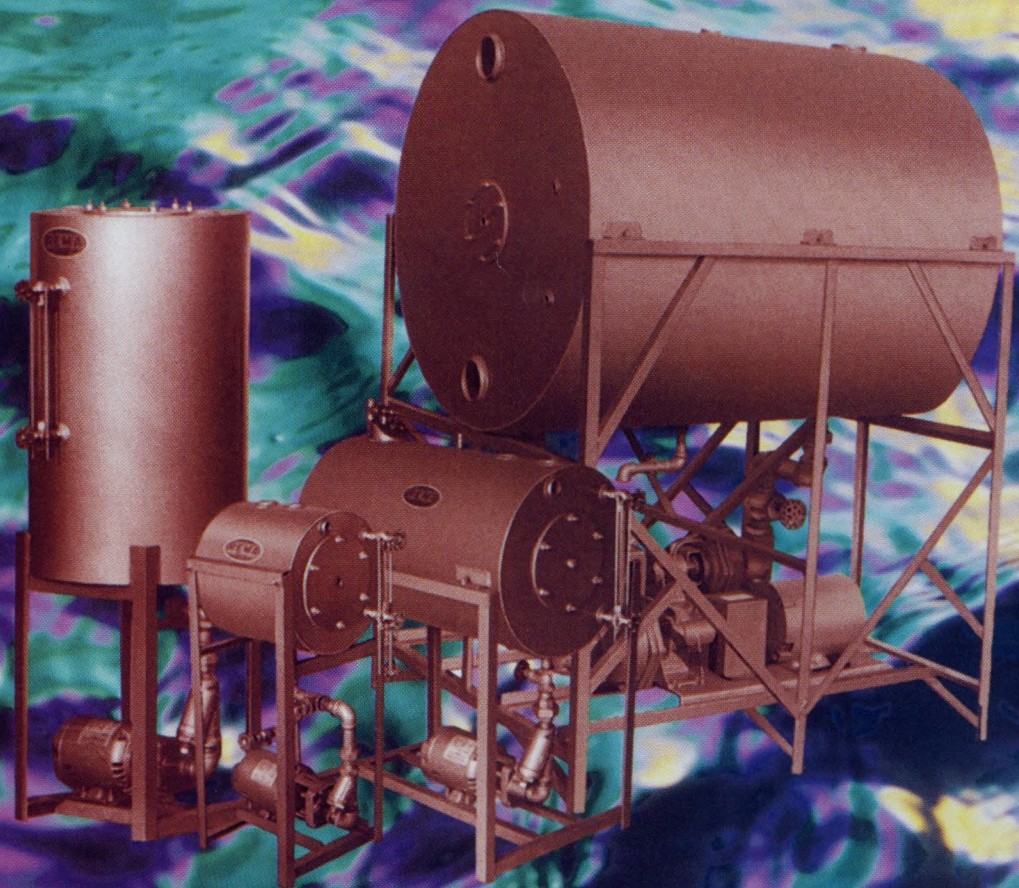


# REMA

## BOILER RETURN SYSTEMS



**Certified Quality, Proven Performance.**



# Large, Small or In-Between... Standard or Custom Models

Rema manufactures high quality Boiler Feed Systems from 500 gallons to 1 gallon capacities ...with Burks pumps ranging in size from 1/3 to 45 HP...for Boilers from 1 to 200 HP...and Replacement Tanks, too!



Whether it's a space-saving Rema vertical return

system that takes

just 18" of floor space or, an extra-large

custom system

made with 3/16" gauge, hot rolled

steel...you're

always assured of

Rema leadership technology, expert

craftsmanship and friendly, personal

service. Cost effective and

durable, Rema boiler return products retrofit to most boilers, generate

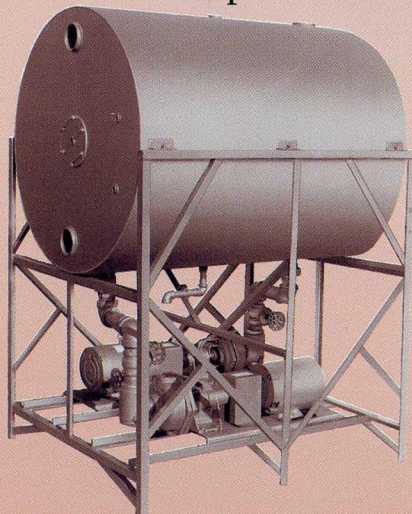
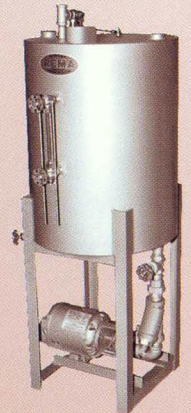
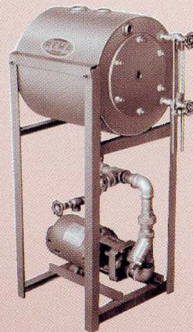
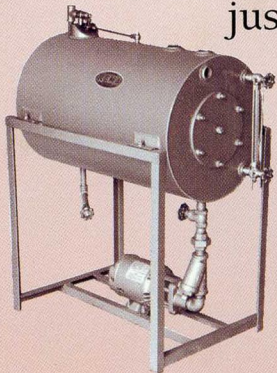
optimum pump

head pressure and reduce vapor

lock problems.

Here's a brief review of the Rema

Boiler Return System group...



- Vertical, 11 Gauge Rolled Steel Return Systems *see page 3*
- Vertical, Non-Syphon Air Gap Return Systems *see page 4*
- Vertical, Stainless Steel Return Systems *see page 5*
- Horizontal, Standard Duty Return Systems *see page 6*
- Horizontal, Non-Syphon Air Gap Return Systems *see page 7*
- Horizontal, Heavy Duty Return Systems *see page 8*
- Horizontal, Stainless Steel Return Systems *see page 9*
- Custom Return Systems *see page 10*
- Replacement Return Tanks *see page 11*



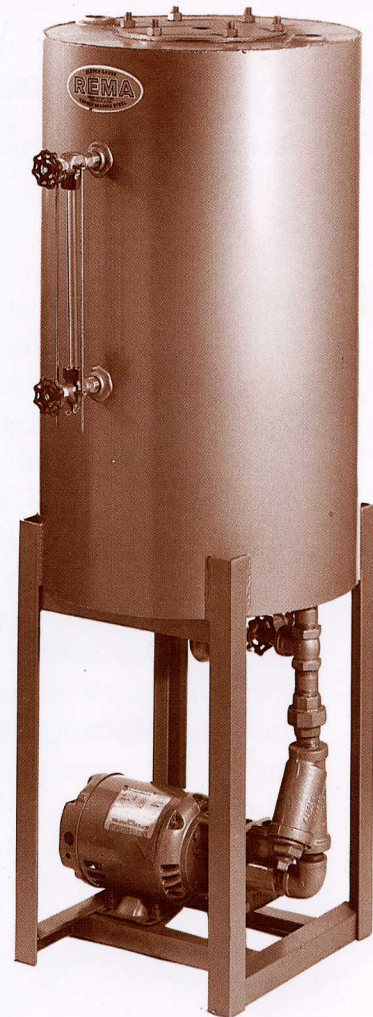


# Vertical Boiler Return Systems

**Quality Built of 11 Gauge Steel, Takes Just 18" Compact Floor Space!**

Rugged, space saving and economical, these expertly crafted vertical systems feature 11 gauge copper bearing steel tanks with certified welding; rigid, one-piece 1 1/4" steel frames; and easy to maintain float assemblies which do not require tank drainage for service. Each includes quality floats, valves, fixtures, strainers, Burks pumps, plus a conveniently located boiler pump discharge. The special Rema design generates greater pump head pressure while reducing vapor lock worries. Yes, Rema verticals work with almost all boiler equipment.

*Replacement tanks are available with floats or, as an add-on option with stand, float assemblies and gauge fixtures.*



## Vertical Return Systems with BURKS Pumps

MODEL NO	BOILER HP	TANK SIZE	TANK CAPACITY	BURKS PUMP	PUMP HP
BJHV-2	4-6	18 x 24	26 gals.	3CT5M 33CT5M	1/3
BJHV-3	7-10	18 x 24	26 gals.	5CT6M 35CT6M	1/2
BJHV-4	10-15	18 x 30	33 gals.	5CT6M 35CT6M	1/2
BJHV-44	15-25	18 x 30	33 gals.	7CT7M 37CT7M	3/4
BJHV-5	15-25	18 x 36	40 gals.	7CT7M 37CT7M	3/4
BJHV-55	25-30	18 x 36	40 gals.	10CS5M 310CS5M	1
BJHV-6	30-35	18 x 42	46 gals.	15CS5M 315CS5M	1 1/2
BJHV-7	35-45	18 x 42	46 gals.	330CS7M	3

## Vertical Replacement Tanks

SIZE DIAMETER AND LENGTH
18 x 24
18 x 30
18 x 36
18 x 42
18 x 42

*Originators of vertical, overhead and dual air vacuums.  
Builders of high quality return systems.*



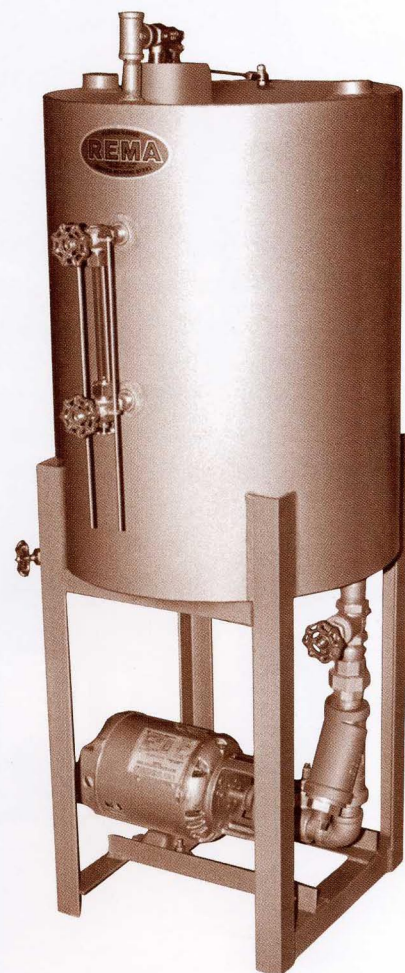


# Vertical Non-Syphon Air Gap Return Systems



## Exclusive, Compact Design... Meets All Code Requirements

The Rema system that guards against the return of polluted water into a city system! Engineered with heavy duty 11 gauge steel, triple welded seams plus quality valves, gauges and fixtures. Each incorporates an easy to maintain float assembly which eliminates tank drainage while servicing. And, it requires just 18" of floor space. Economical and sturdy, all retrofit with most boilers, and feature the quality materials, expert craftsmanship and friendly, personal service that you expect from Rema. High reliability Burks pumps assure dependable operation. Rema non-syphon air gap returns include: a linkage connecting rod, cold water inlet, vent with safety bar, an easy access plate, condensate return, a 5" dia. float ball with rod, sight glass, air gap tube, shutoff gate valve, a drain valve and a strainer.



### Non-Syphon Air Gap Vertical Return Systems with Burks Pumps

MODEL NO	BOILER HP	TANK SIZE	TANK CAPACITY	BURKS PUMP	PUMP HP
BJHV-2NS	4-6	18 x 24	26 gals.	3CT5M 33CT5M	1/3
BJHV-3NS	7-10	18 x 24	26 gals.	5CT6M 35CT6M	1/2
BJHV-4NS	10-15	18 x 30	33 gals.	5CT6M 35CT6M	1/2
BJHV-44NS	15-25	18 x 30	33 gals.	7CT7M 37CT7M	3/4
BJHV-5NS	15-25	18 x 36	40 gals.	7CT7M 37CT7M	3/4
BJHV-55NS	25-30	18 x 36	40 gals.	10CS5M 310CS5M	1
BJHV-6NS	30-35	18 x 42	46 gals.	15CS5M 315CS5M	1 1/2
BJHV-7NS	35-45	18 x 42	46 gals.	330CS7M	3

### Vertical Replacement Tanks

SIZE DIAMETER AND LENGTH
18 x 24
18 x 30
18 x 36
18 x 42
18 x 42

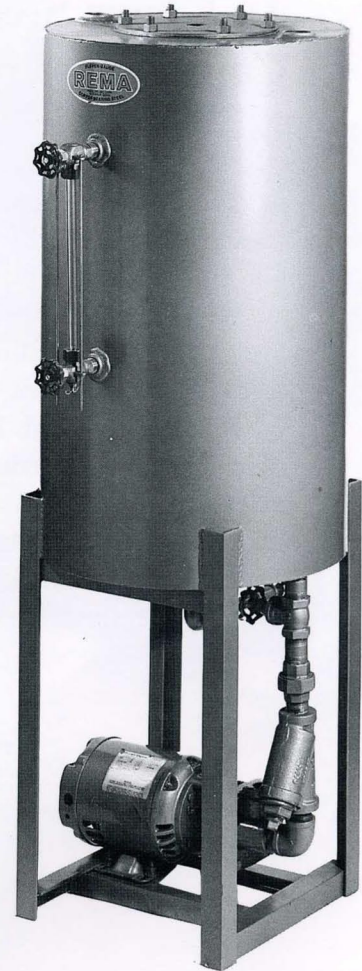


# Stainless Steel Vertical Boiler Return Systems

## Durable, Reliable, Rugged... 8 to 50 Gallon Tank Capacities

There's nothing like gleaming stainless steel to give you the look of quality, durability and long lasting service. And there's nothing like Rema for performance, workmanship, attention to detail and service. Supplied with high quality Burks pumps from 1/3 to 5 HP, Rema stainless steel boiler returns are available with single or three phase motors - 1750 rpm and 3500 rpm. Each unit has a durable stainless steel tank, all floats, return tubes, shut off valves, drain valves, strainers, cold water inlets, return couplings and vents with safety bar.

*Stainless Steel Non-Syphon Air Gap returns also available.*



### Vertical Stainless Steel Return Systems with BURKS Pumps

MODEL NO	BOILER HP	TANK SIZE	TANK CAPACITY	BURKS PUMP	PUMP HP
BJSSV-2	4-6	18 x 24	26 gals.	3CT5M 33CT5M	1/3
BJSSV-3	7-10	18 x 24	26 gals.	5CT6M 35CT6M	1/2
BJSSV-4	10-15	18 x 30	33 gals.	5CT6M 35CT6M	1/2
BJSSV-44	15-25	18 x 30	33 gals.	7CT7M 37CT7M	3/4
BJSSV-5	15-25	18 x 36	40 gals.	7CT7M 37CT7M	3/4
BJSSV-55	25-30	18 x 36	40 gals.	10CS5M 310CS5M	1
BJSSV-6	30-35	18 x 42	46 gals.	15CS5M 315CS5M	1 1/2
BJSSV-7	35-45	18 x 42	46 gals.	330CS7M	3
BJSSV-8	46-80	18 x 48	50 gals.	350CS9M	5

### Stainless Steel Replacement Return Tanks

SIZE DIAMETER AND LENGTH
18 x 24
18 x 30
18 x 36
18 x 42
18 x 48

Originators of vertical, overhead and dual air vacuums.  
Builders of high quality return systems.

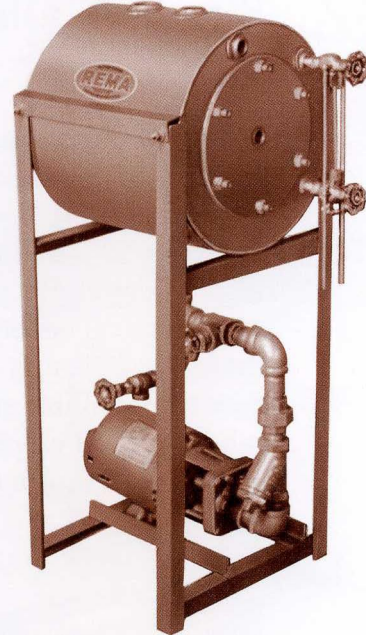




# Standard Horizontal Boiler Return Systems

## 14 Gauge Steel...10 Sizes... Capacities From 8 to 100 Gallons

Featuring triple welded tank seams plus rigid, one-piece welded 1 1/4" steel frames, these Rema return systems are built to perform and built to last. All are equipped with exterior safety vent bars. 100% machined brass 1/2" ballcocks, shut off valves, strainers, condensate returns, drain valves, and six non-twist-off studs welded to the tank head. Each incorporates a boiler pump discharge and a Burks bronze fitted turbine pump. Tank sizes range from 14" x 13" to 18" x 48" and are custom engineered for all steam process applications. Carefully built with quality components, they're backed by Rema's friendly, personal service plus quick delivery.



### Standard Horizontal Return Systems

MODEL NO	BOILER HP	TANK SIZE	TANK CAPACITY	BURKS PUMP	PUMP HP
BJ-1	1-4	14 x 13	8 gals.	3CT5M	1/3
BJ-2	4-6	14 x 24	16 gals.	5CT6M	1/3
BJ-3	7-15	14 x 24	16 gals.	5CT6M	1/2
BJ-4	10-15	18 x 30	30 gals.	7CT7M	1/2
BJ-44	15-25	18 x 30	30 gals.	7CT7M	3/4
BJ-5	15-25	18 x 36	36 gals.	7CT7M	3/4
BJ-55	25-35	18 x 36	36 gals.	10CS5M	1
				310CS5M	
BJ-6	25-35	18 x 42	42 gals.	15CS5M	1 1/2
				315CS5M	
BJ-7	31-55	18 x 48	50 gals.	330CS7M	3
BJ-8	46-80	18 x 48	50 gals.	350CS9M	5
BJ-9	80-100	24 x 60	100 gals.	350CS9M	5

### Replacement Tanks

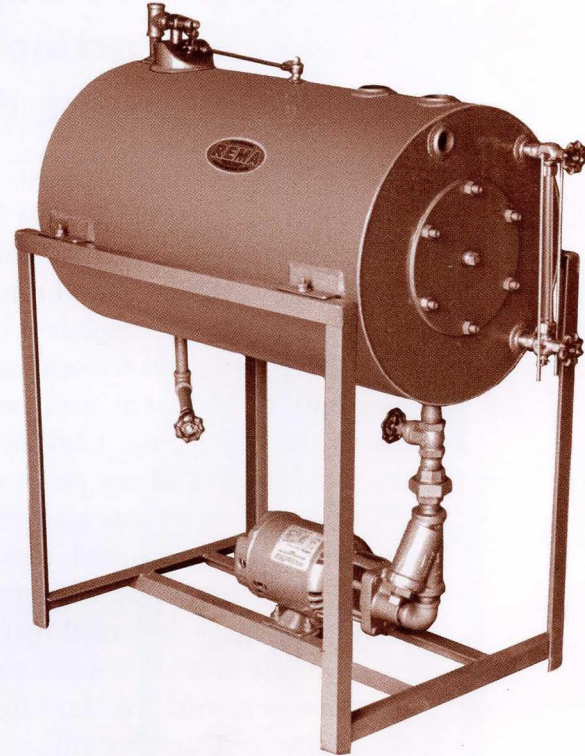
SIZE DIAMETER AND LENGTH
14 x 13
14 x 24
18 x 30
18 x 36
18 x 42
18 x 48
24 x 60



# Horizontal Non-Syphon Air Gap Return Systems

## Heavy Duty 11 Gauge Steel Tanks... Capacities From 26 to 52 Gallons

Everything about these horizontal, non-syphon, air gap systems spells quality. Engineered to meet all code requirements, they guard against the return of polluted water into a city system, are sturdy, long lasting and easy to maintain. Float assemblies remove simply without tank draining for easy service. Heavy duty steel reinforced with triple welded seams is used plus quality gauges, valves and fixtures. What's more, these units retrofit with most boilers. Complete with cold water inlets, linkage connecting rods, condensate returns, air gap tubes, 5" dia. float ball plus rod, shut off gate valves, easy drain valves and pumps, easy to clean strainers and safety vent bars.



### Horizontal Non-Syphon Return Systems with BURKS Pumps

MODEL NO	BOILER HP	TANK SIZE	TANK CAPACITY	BURKS PUMP	PUMP HP
BJH-2NS	4-6	18 x 24	26 gals.	3CT5M 33CT5M	1/3
BJH-3NS	7-10	18 x 24	26 gals.	5CT6M 35CT6M	1/2
BJH-4NS	10-15	18 x 30	30 gals.	5CT6M 35CT6M	1/2
BJH-44NS	15-25	18 x 30	30 gals.	7CT7M 37CT7M	3/4
BJH-5NS	15-25	18 x 36	36 gals.	7CT7M 37CT7M	3/4
BJH-55NS	25-30	18 x 36	36 gals.	10CS5M 310CS5M	1
BJH-6NS	30-35	18 x 42	42 gals.	15CS5M 315CS5M	1 1/2
BJH-7NS	35-45	18 x 48	50 gals.	330CS7M	3
BJH-8NS	45-60	18 x 48	50 gals.	350CS9M	5

### Replacement Tanks (11 Gauge) Non-Syphon Air Gap

SIZE DIAMETER AND LENGTH
18 x 24
18 x 30
18 x 36
18 x 42
18 x 48

Originators of vertical, overhead and dual air vacuums.  
Builders of high quality return systems.



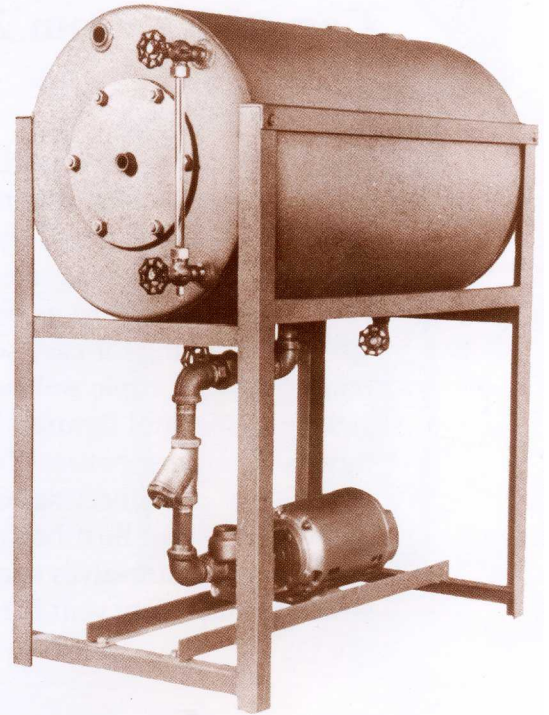


# Heavy Duty Horizontal Boiler Return Systems

## Heavy Duty 11 Gauge Steel Construction... Built For Lasting Performance

Because your operation calls for heavy duty performance, and heavy duty reliability, Rema has built these 11 gauge steel, horizontal return systems to meet the strictest criteria. Complete with extra duty welded seams, rugged steel frames, easy to remove top bars for fast tank replacement, and many built-in features to assure long term use. Choose from 11 sizes, each engineered for years of top performance. And with all the fixtures, valves, drains and easy access, boiler pump discharge units included, they incorporate proven Burks turbine pumps, engineered for quality and value. Self priming, with centrifugal design, Burks pumps are particularly suited to steam applications. For second-to-none performance, day after day, year after year, Rema Heavy Duty Systems are a premier value.

*Tanks are fabricated from 60% heavier steel than standard units.*



### Heavy Duty Horizontal Return Systems with BURKS Pumps

MODEL NO	BOILER HP	TANK SIZE	TANK CAPACITY	BURKS PUMP	PUMP HP
BJH-1	1-4	14 x 13	8 gals.	3CT5M	1/3
BJH-2	4-6	14 x 24	16 gals.	3CT5M	1/3
BJH-3	7-15	14 x 24	16 gals.	5CT6M	1/2
BJH-4	15-25	18 x 30	30 gals.	5CT6M	1/2
BJH-44	15-25	18 x 30	30 gals.	7CT7M	3/4
BJH-5	15-25	18 x 36	36 gals.	7CT7M	3/4
BJH-55	25-35	18 x 36	36 gals.	10CS5M 310CS5M	1
BJH-6	25-35	18 x 42	42 gals.	15CS5M 315CS5M	1 1/2
BJH-7	31-55	18 x 48	50 gals.	330CS7M	3
BJH-8	46-80	18 x 48	50 gals.	350CS9M	5
BJH-9	80-100	24 x 60	100 gals.	350CS9M	5

### Heavy Duty Replacement Tanks

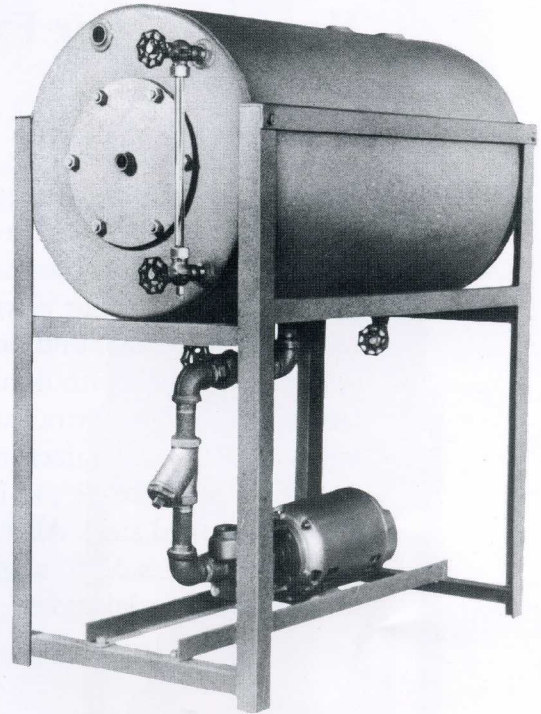
SIZE DIAMETER AND LENGTH
14 x 13
14 x 24
18 x 30
18 x 36
18 x 42
18 x 48



# Horizontal Stainless Steel Boiler Return Systems

## Stainless Steel For Smart Looks... Rema Built For Performance

Leadership technology...proven quality components... careful workmanship...close attention to detail...you get all of these plus the attractive looks of stainless steel with Rema's latest advance design top producer boiler return systems. You couldn't ask for more, at any price. Choose from a range of 9 sizes with tank capacities from 8 to 100 gallons and boiler HP from 1 to 100. Available with single or three phase motors, 1750 rpm and 3500 rpm, these incorporate everything you need, backed by personal, friendly service and lasting reliability. Of course, all are equipped with high performance Burks turbine pumps.



*Stainless Steel Non-Syphon Air Gap return systems also available.*

### Horizontal Stainless Steel Return Systems with BURKS Pumps

MODEL NO	BOILER HP	TANK SIZE	TANK CAPACITY	BURKS PUMP	PUMP HP
BJSS-2	4-6	14 x 24	16 gals.	3CT5M	1/3
BJSS-3	7-15	14 x 24	16 gals.	5CT6M	1/2
BJSS-4	10-15	18 x 30	30 gals.	5CT6M	1/2
BJSS-44	15-25	18 x 30	30 gals.	7CT7M	3/4
BJSS-5	15-25	18 x 36	36 gals.	7CT7M	3/4
BJSS-55	25-35	18 x 36	36 gals.	10CS5M	1
BJSS-6	25-35	18 x 42	42 gals.	15CS5M	1 1/2
BJSS-7	31-55	18 x 48	50 gals.	330CS7M	3*
BJSS-8	46-80	18 x 48	50 gals.	350CS9M	5*

### Stainless Steel Horizontal Replacement Return Tanks

SIZE DIAMETER AND LENGTH
14 x 24
18 x 30
18 x 36
18 x 42
18 x 48
24 x 36
24 x 48
24 x 60
30 x 60
30 x 72
36 x 60
36 x 72

\* Available with three phase motors only.

Originators of vertical, overhead and dual air vacuums.  
Builders of high quality return systems.



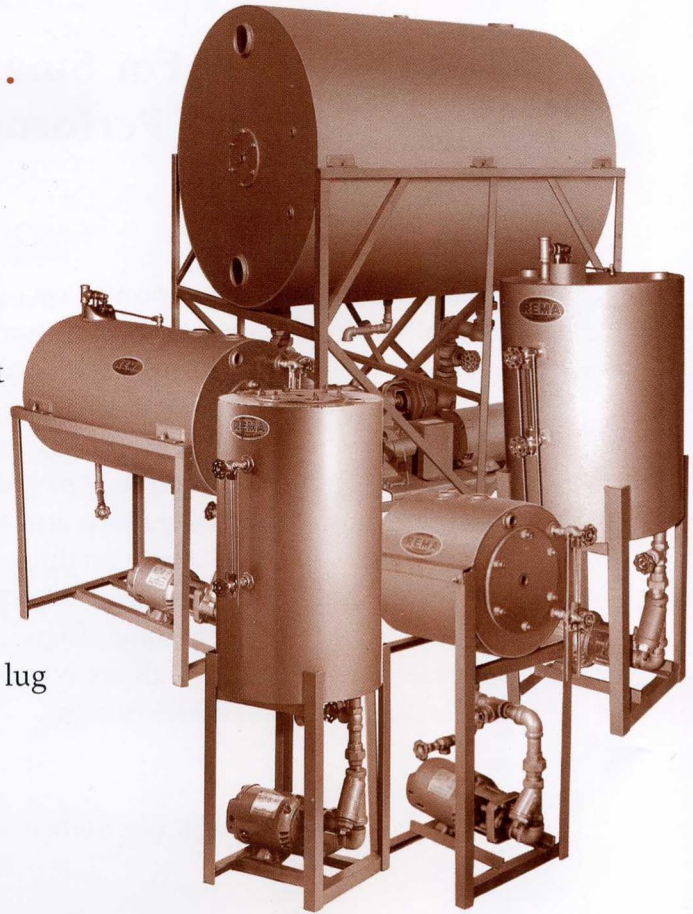


# Custom Systems and Extra Large Replacement Tanks



## Vertical and Horizontal Types... Heavy Duty or Extra Heavy Steel Designs.

Everyday, Rema engineering builds custom return tanks to meet individual requirements. Just give us measurements and location. We'll design a unit that you need for your plant and your production schedules. We also build tandem type, return systems complete with double pumps for the largest operations. Extra capacity replacement tanks are Rema manufactured in sizes from 24" x 36" to 42" x 84", in both 11 gauge and 3/16" hot rolled steel. All are equipped with 1 1/2" x 1 1/2" x 3/16" angle iron leg stands; side lug mounts and special styles.



### Typical Custom Return Systems

TANK SIZE	TANK CAPACITY
24 x 36	70 gals.
24 x 48	94 gals.
24 x 60	108 gals.
30 x 60	184 gals.
30 x 72	220 gals.
30 x 120	368 gals.
36 x 60	265 gals.
36 x 72	320 gals.
36 x 84	375 gals.

### Typical Heavy Duty Replacement Tanks 3/16" Thick

TANK SIZE	TANK CAPACITY
24 x 36	70 gals.
24 x 48	94 gals.
24 x 60	108 gals.
24 x 72	140 gals.
30 x 60	184 gals.
30 x 72	220 gals.
30 x 120	368 gals.
36 x 60	265 gals.
36 x 72	317 gals.
42 x 84	500 gals.

### Typical Replacement Tanks 11 Gauge

TANK SIZE	TANK CAPACITY
24 x 36	70 gals.
24 x 48	94 gals.
24 x 60	108 gals.
24 x 72	140 gals.
30 x 60	184 gals.
30 x 72	220 gals.
30 x 120	368 gals.
36 x 60	265 gals.
36 x 72	317 gals.
42 x 84	500 gals.