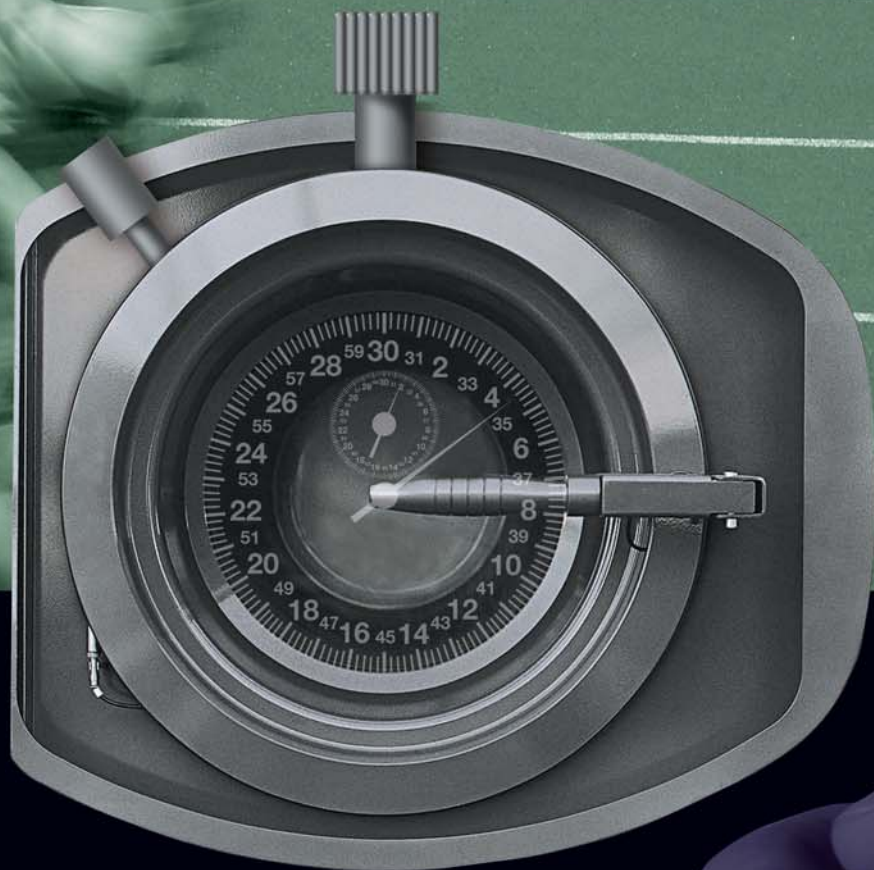


# Fast. Smart. Clean.



## SERIE UNION HP&HL 800

IL LAVAGGIO A SECCO IDEALE  
CON I SOLVENTI ALTERNATIVI



The Ideal Drycleaning System For Alternative Solvents.

# We know what it takes to be First.



Since its inception in 1976, Union has been the benchmark by which all other drycleaning systems are measured.

We lead the field in high-quality design and construction, incorporating continual advances in technology made possible by the industry's most creative and visionary research team.

The vast Union manufacturing and assembly complex in Bologna, Italy houses state-of-the-art research and development, high-tech inspection and CAD-based design facilities.

Over 80% of machine components are made in-house to assure you the highest level of quality control in every Union product.

Today, Union drycleaning machines can be found in over 60 countries; sold and serviced by more than 275 factory-authorized dealers worldwide.

To keep abreast of the latest advances in product technology, Union sponsors periodic technical seminars and training courses for service personnel and drycleaners alike.

In North America alone, Union Drycleaning Systems outnumber competitive brands by more than two-to-one.

At Union, we know what it takes to be first...and how to help your business be first at the finish line in drycleaning profits!

*H I S T O R Y*

*Q U A L I T Y*

*T E C H N O L O G Y*

*R E S E A R C H*

*I N N O V A T I O N*

*S A F E T Y*



# The H-800 Series



## The Ideal Drycleaning System For Alternative Solvents.

The result of Union's three-decade leadership in the drycleaning industry is an unprecedented level of innovation and safety you'll find in the new H-800 Series...innovation and safety that translates into faster production, lower energy and maintenance costs, easier operation and ecologically superior performance. From the innovative Dialog Plus™ computer brain to advanced Idromatic™ environmentally safe still cleaning, the Union H-800 Series gives new meaning to the words Fast, Smart and Clean.

Whether you choose to use hydrocarbon or silicone-based solvents, there's a size and model in the new Union H-800 Series that will be the ideal drycleaning system for you.



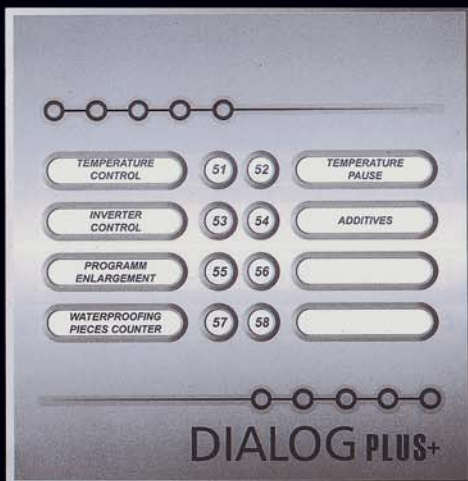
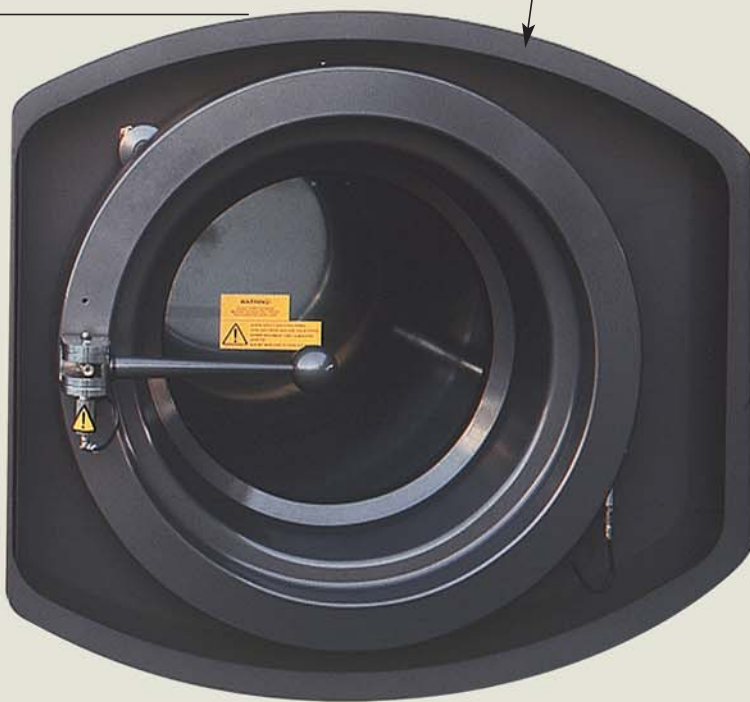
# Advanced Technology for Greater Performance.

Our new Dialog™ Computer has 20 factory-set programs to handle virtually every cleaning need no matter which type of alternative solvent you choose to use! All programs can be customized on-site thanks to simple-write manual overrides. And by simply entering a code, you can switch from hydrocarbon to silicone solvents and back again without making any mechanical changes to the system whatsoever. All system functions and program controls appear in the easy-to-read, quick-access call-up menu panel. The large display continuously monitor and show solvent temperature, outlet air temperature and inlet air temperature. Exclusive Maintenance Man™ feature keeps accurate, progressive accounts of operation performance and routine maintenance on a time/day/date basis. All data can be retrieved and logged into any PC desktop or laptop personal computer for easy record keeping.

Extra-large loading door features computer-controlled PosiSeal™ lock which prevents door opening until final cycle is completed and all vapor has been removed from the system. Newly designed Cyclonic Airflo™ basket maximizes temperature-controlled air throughout the load for faster, more efficient drying and cool-down. It also features automatic back-plate washdown and residual lint removal. New rim design keeps buttons and other objects from getting lodged between the door and inside rim.

All new Union HL- 800 Series Systems feature up-front filter and temperature gauges for easy reading, front-access to primary controls and components, and illuminated sightglasses in strategic locations for quick visual inspection.

Union's easy plug-in microchips let you expand the capabilities of the HL&HP 800 Series. It is now possible to upgrade software, download data direct to your PC and copy programs from one machine to another.



**Union Unleashes The Brain! Dialog Plus™ is the latest advance in computerized operation technology for drycleaning. And it is standard on every new Union HP&HL 800 Series System! With Dialog Plus™ you can run different multiple programs without having to change temperature settings or inverter drive speeds. Once the individual programs are entered, Dialog Plus™ automatically remembers the settings for you. So you can run a program with standard temperatures and basket speeds, then switch to a "delicates program" with slower basket speed and lower solvent and drying temperatures without having to adjust the settings. Dialog Plus™ also allows individual control for solvent, inlet and outlet air temperatures for each step in the cycle, and monitors and displays all temperatures in the system, including distilled solvent temperature and evaporator temperature. It even pauses a cycle until correct solvent and air temperatures for operation are attained, automatically controls soap and additive injections, and lets you quickly and simply modify or enlarge any segment of the program in use. That's why we call it The Brain. You'll call it Indispensable!**

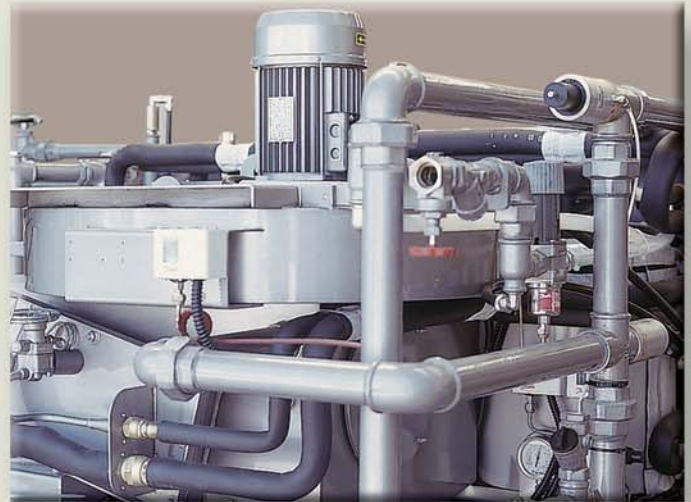


# ...Now One System Gives You Freedom of Solvent Choice!



Multiple, independently functioning high-micron self-cleaning spin disc EcoFilters™ and large-capacity carbon cartridge filters are standard on all Union H-800 Series Systems to assure optimum filtration of both large and small particles for maximum solvent purity. Computer controls automatically pair filter operation for whites, darks or colors according to specific programs.

Union's Idromatic™ Still Cleaning System with Pneumo Still™ completely removes sludge, lets you scrape\* still interior walls and floor, then automatically pumps out all residue for containerization and safe disposal...all without opening the still door so there is never any exposure to solvent fumes or waste. The still is then automatically sprayed with a fine jet of reclaimed solvent to assure a totally cleaned and purified chamber prior to refill. \*Scraper not available on SlimSpace™ models.



New, I.T.D.S.™ drying system\* with extra large Turbo 2™ Fan can cut drying time by up to 10 minutes or more compared to previous models. Easy-to-read digital display panels show drying temperature, cold air temperature and still water temperature. The refrigeration unit is divided into separate segments for simplified maintenance and reduced downtime\*. Compressor, refrigeration coil, and heat-exchange coil can be individually serviced without removing the entire system\*. Sealed coils plus quick disconnects prevent freon gas discharge\*. Saves energy, reduces operating costs and controls the exact solvent temperature for every cleaning requirement.

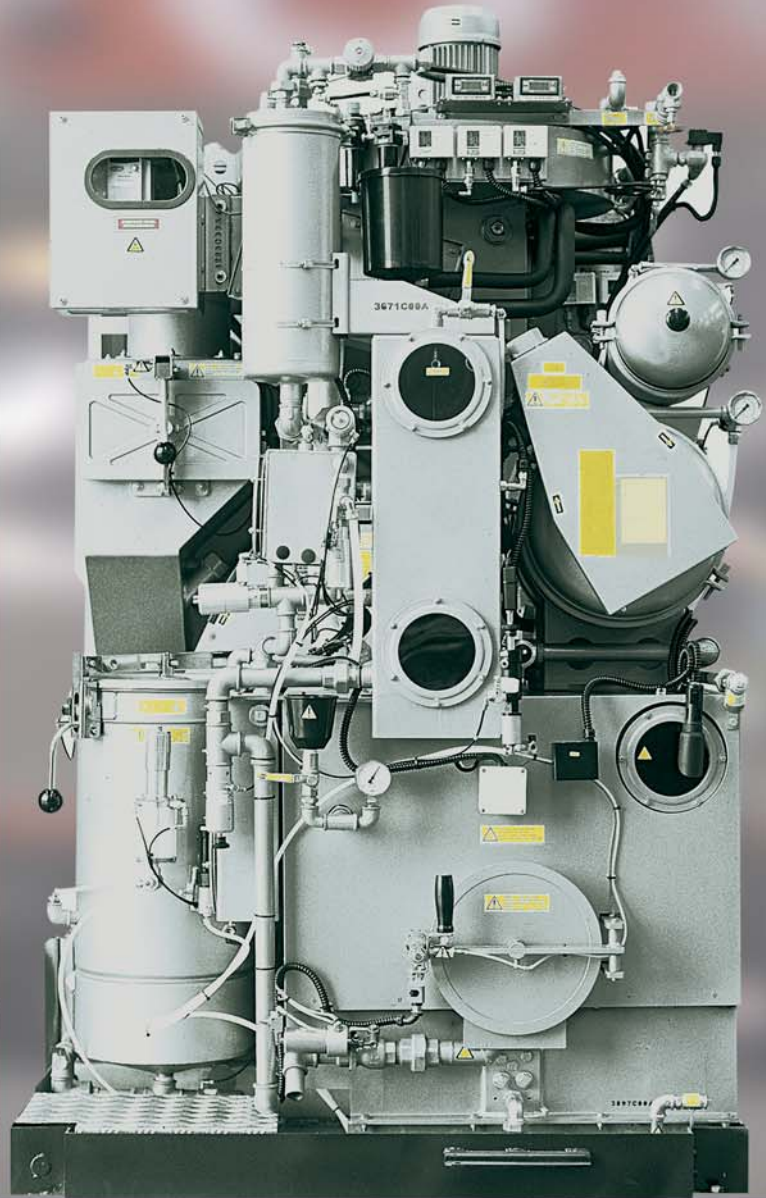
\* Not available on model HL-835

Union's high-efficiency, multi-stage inline water/solvent separation system assures maximum solvent quality control and purity. Large sightglass let you visually inspect levels at each stage of the separation process.



**The Ideal Drycleaning System For Alternative Solvents.**

# UNION HP-840, HP-850, HP-860 Slim Space™ FAST. SMART. CLEAN.



Exceptional cleaning, economy and ecological performance in 40-and 50-pound load capacities with a slim, narrow foot-print that's perfect for plants with limited floor space. Multi-stage solvent/water separation system. Large-access loading door.

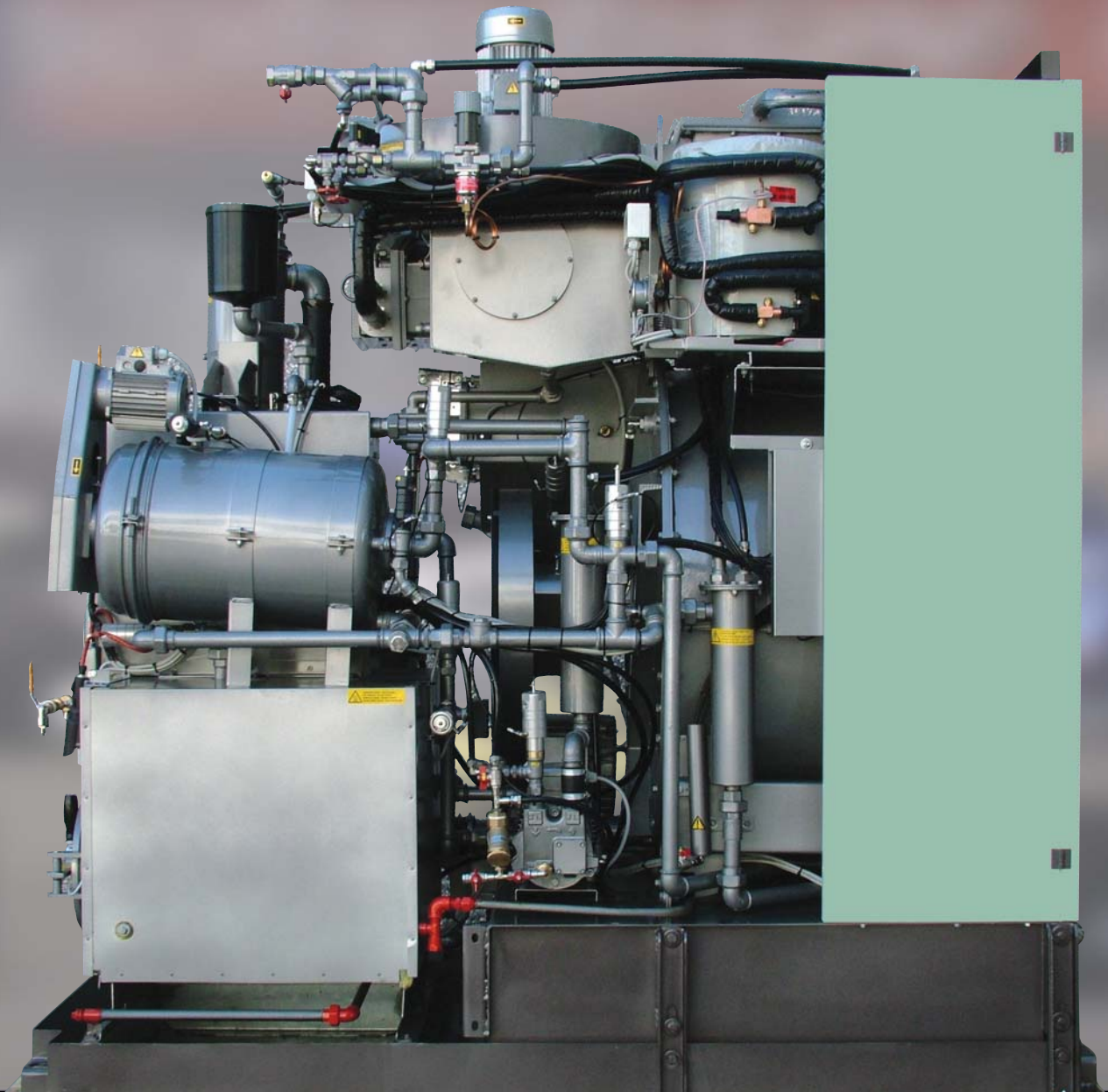
Cyclonic Airflo™ basket. Dialog™ Computer with new Dialog Plus™ . Front digital solvent/air temperature display panels. Easy front access to electronics, computer and still control components. Two holding/transfer tanks with slanted base, illuminated sightglasses and Sensor Plus™ to prevent solvent foaming and bacteria growth. Illuminated front sightglasses for still and basket solvent washdown inlet. 24-volt computer control circuitry. All electronic components are ETL-listed.



**The Ideal Drycleaning System For Alternative Solvents.**



# UNION HP-840, HP-850, HP-860 Slim Space™ FAST. SMART. CLEAN.



Logical, ergonomically designed for convenient, easy access to all components for quick maintenance. Multiple, independent spin disc EcoFilters™ and carbon cartridge filters. Convenient access to oversized double lint filters and button trap. Multi-stage gravitational water separator with sightglasses. Energy efficient fan and refrigeration system. Three independently controlled holding/transfer tanks with slanted base, sightglasses, and Sensor Plus™ to prevent solvent foaming and bacteria growth. Idromatic™ Still Cleaning System with Pneumo Still™ available. Easily accessible piping and fittings. High-efficiency pumps. Industrial grade stainless steel and brass in all critical areas. Still overflow protection and heavy-duty steel containment base. Cleaning modules also available (no filter/still).



# UNION HL-840, HL-850, HL-860 FAST. SMART. CLEAN.



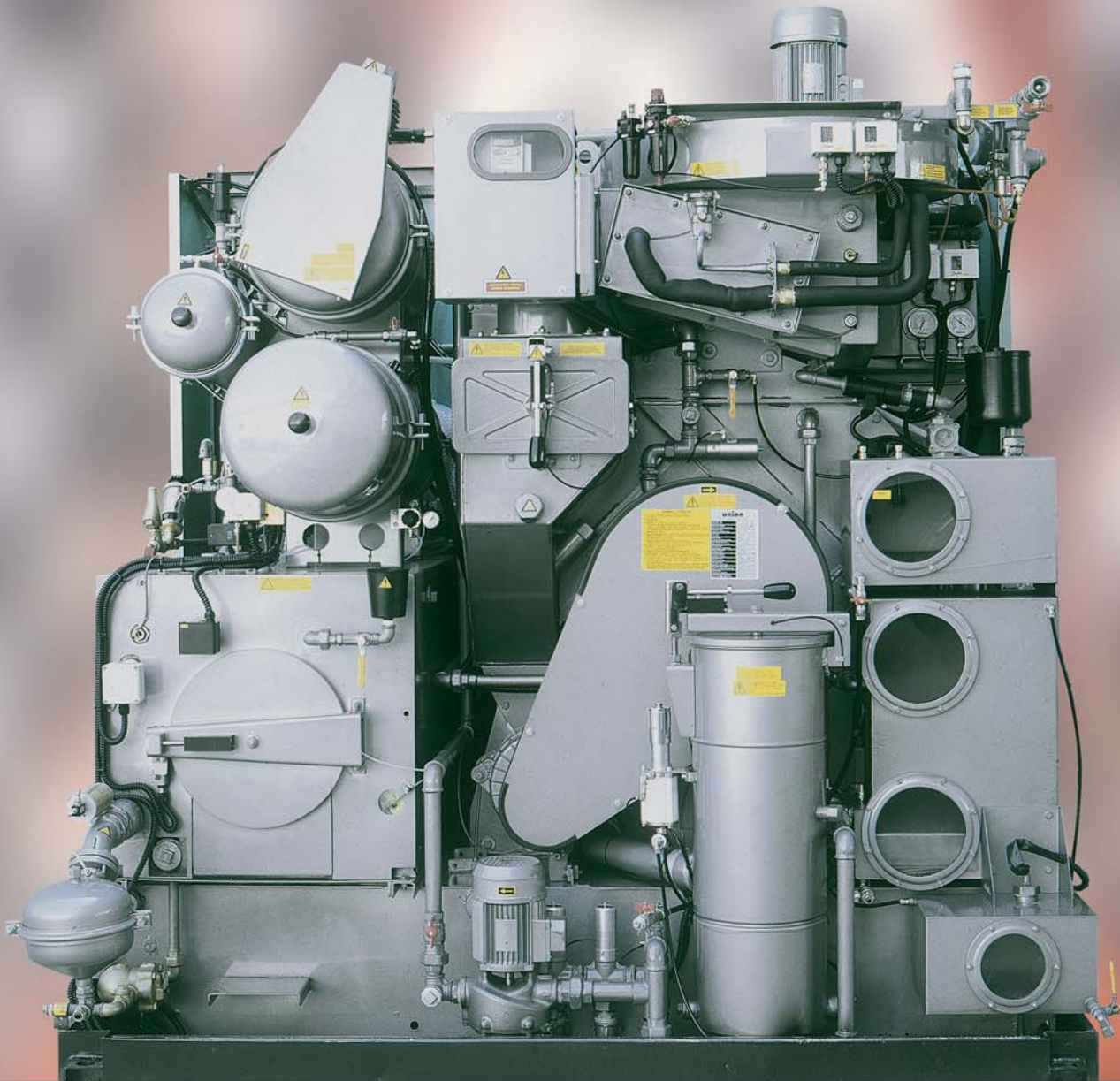
Exceptional cleaning, economy and ecological performance in 40-,50- and 60-pound load capacities. Large-access loading door. Cyclonic Airflo™ basket. Dialog™ Computer with Dialog Plus™. Front digital solvent/air temperature display panels. Front analog filter gauges. Easy front access to electronics, computer and still control components. Also available in all Cartridge Filtration (no distillation) Models.



**The Ideal Drycleaning System For Alternative Solvents.**



# UNION HL-840, HL-850, HL-860 FAST. SMART. CLEAN.



Logical, ergonomically designed for convenient, easy access to all components for quick maintenance. Multiple, independent spin disc EcoFilters™ and carbon cartridge filters. Convenient access to oversized double lint filters and button trap. Extra-large Turbo 2™ Fan and modular refrigeration system. Multi-stage gravitational water separator with sightglasses. Idromatic™ Still Cleaning System with Pneumo Still™. Quick-disconnect hoses. Easily accessible piping, fittings and quick cut-off valves. High-efficiency pumps. Industrial grade stainless steel and brass in all critical areas. Still overflow protection and heavy-duty steel containment base. 24-volt computer circuitry. ETL-listed.



**The Ideal Drycleaning System For Alternative Solvents.**

# UNION HL-880, HL-890 FAST. SMART. CLEAN.



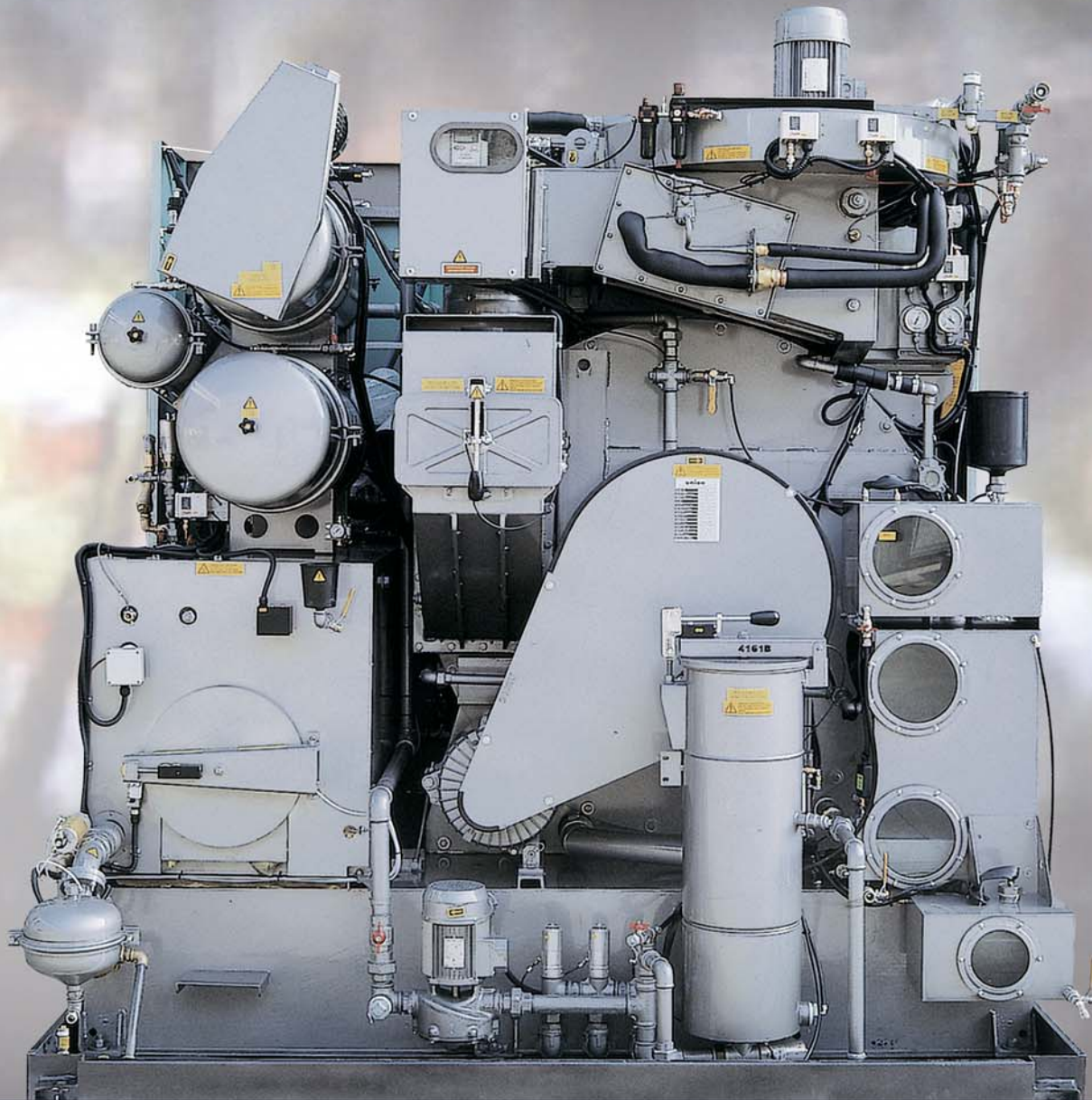
Exceptional cleaning, economy and ecological performance in 80- and 90-pound load capacities. Large-access loading door. Cyclonic Airflo™ basket. Dialog™ Computer with Dialog Plus™. Front digital solvent/air temperature display panels. Front analog filter gauges. Easy front access to electronics, computer and still control components. Front still scraper access door. Illuminated front sightglasses for still and basket solvent washdown inlet. Three independently controlled solvent holding/transfer tanks with Sensor Plus™ to prevent solvent foaming and bacteria growth, slanted base and illuminated sightglasses. 24-volt computer circuitry. All electronic components ETL-listed.



**The Ideal Drycleaning System For Alternative Solvents.**



# UNION HL-880, HL-890 FAST. SMART. CLEAN.



Logical, ergonomically designed for convenient, easy access to all components for quick maintenance. Multiple, independent spin disc EcoFilters™ and carbon cartridge filters. Convenient access to oversized double lint filters and button trap. Extra-large Turbo 2™ Fan. Multi-stage gravitational water separator with sightglasses. Modular designed refrigeration system. Idromatic™ Still Cleaning System with Pneumo Still™. Quick-disconnect hoses. Easily accessible piping, fittings and quick cut-off valves. High-efficiency pumps. Industrial grade stainless steel and brass in all critical areas. Still overflow protection and heavy-duty steel containment base.



**The Ideal Drycleaning System For Alternative Solvents.**

# Technical Specifications:

		HP840	HP850	HP860	HL840	HL850	HL860	HL880	HL890
<b>LOAD CAPACITY</b>	<b>Kg</b>	18	20	25	18	20	25	32	40
<b>BASKET</b>									
Volume	lt	340	400	500	340	400	500	645	800
Diameter	mm	900	1000	1000	900	1000	1000	1200	1200
Depth	mm	535	510	640	535	510	640	570	710
Wash speed	rpm	12 ÷ 50	12 ÷ 50	12 ÷ 50	12 ÷ 50	12 ÷ 50	12 ÷ 50	12 ÷ 50	12 ÷ 50
Extract speed	rpm	300 ÷ 540	300 ÷ 540	300 ÷ 540	300 ÷ 540	300 ÷ 540	300 ÷ 540	300 ÷ 450	300 ÷ 450
Door opening	mm	500	500	500	500	500	500	500	600
<b>TANKS</b>									
Useful volume tank 1	lt	95	110	120	110	160	160	240	240
Useful volume tank 2	lt	150	165	180	110	160	160	240	240
Useful volume tank 3	lt	-	-	-	200	200	200	330	330
<b>STILL</b>									
Useful Still Volume at half inspection	lt	190	190	190	190	260	260	360	360
Total Still Volume	lt	225	225	225	230	325	325	455	455
<b>NYLON FILTER</b>									
Volume nylon filter housing	lt	55	55	55	55	75	75	75	100
Nylon filter area	mt <sup>3</sup>	3,9	3,9	3,9	3,9	5,5	5,5	5,5	7,8
Filter disks	nr	26	26	26	26	39	39	39	52
<b>PURITAN FILTER</b>									
Volume Puritan filter housing	lt	13	13	13	25	25	25	25	25
Tubes numbers	nr	1	1	1	1	1	1	1	1
Cartridges quantity	nr	1	1	1	2	2	2	2	2
<b>DUAL CARTRIDGE FILTER</b>									
Volume Dual cartridge filter housing	lt	55	55	55	55	85	85	85	105
Tubes numbers	nr	1	1	1	1	1	1	1	1
Cartridges quantity	nr	2	2	2	2	3	3	3	4
<b>ELECTRIC POWER</b>									
Working power (ELECTRIC MACHINE)	Kw	33	34,5	34,5	30	36	36	-	-
Wash/Extract motor - with Inverter	Kw	1,7 ÷ 3,5	2 ÷ 5,5	2 ÷ 5,5	1,7 ÷ 3,5	2 ÷ 5,5	2 ÷ 5,5	3 ÷ 6,2	3 ÷ 6,2
Solvent pump motor	Kw	0,75	0,75	0,75	0,75	0,75	0,75	1,1	1,1
Fan motor	Kw	2,25	2,25	2,25	2,25	2,25	2,25	2,25	2,25
Refrigerator compressor	Kw	3,75	4,85	4,85	3,75	4,85	4,85	4,85	4,85
Vacuum Pump Motor	Kw	0,55	0,55	0,55	0,55	0,55	0,55	0,55 x 2	0,55 x 2
Heating elements	Kw	15	15	15	21	25,5	25,5	-	-
Still electric elements	Kw	9	9	9				-	-
Working power (STEAM MACHINE)	Kw	9	10,5	10,5	9	10,5	10,5	12,5	12,5
<b>MACHINES WEIGHTS</b>									
Empty machine weight	Kg	1691	1820	1900	1830	2100	2180	2840	2950
Machine weight with solvent	Kg	1934	2090	2195	2390	2660	2740	3620	3730
Static charge on the floor with solvent	Kg/mt <sup>3</sup>	716	741	754	771	714	736	757	780
Dynamic charge on the floor (+10%)	Kg/mt <sup>3</sup>	1118	1205	1300	1018	1081	1178	1140	1242
Packaged machine weight	Kg	1870	2000	2080	2110	2250	2330	3220	3330
<b>MACHINES DIMENSIONS</b>									
(A) Width front Machine	mm	1250+100	1300+100	1300+100	2000+100	2140+100	2140+100	2360+120	2360+120
(B) Depth	mm	2160	2170	2300	1550	1740	1740	2025	2025
(C) Height With Fan	mm	2210	2340	2340	2195	2285	2285	2580	2580
(D) Height Without Fan	mm	2040	2095	2095	2025	2095	2095	2345	2345

**Note: machine noise output level is less than 70 dB (A)**

**Technical details and dimensions may be subject to modification without prior notice.**



**UNION s.p.a.**  
 40010 Sala Bolognese (Bologna) ITALY  
 Via Labriola 4/D  
 Tel.: (+39) 051.6814996 - Fax: (+39) 051.6814660  
 E-mail: union@union.stm.it  
 Web page: www.union.stm.it